

MCTRA

Muskegon County Trail Riders Association



Welcome to the MCTRA newsletter!
This is where you will find updates on what is happening within our county on our equestrian trails.

Thank you to our new members! We appreciate your support.

To find membership form and more information about MCTRA, please visit our website.



MUSKEGONCOUNTYTRAILRIDERSASSOCIATION.COM

Happy December!

We hope this newsletter finds you nice and warm!

We have officially been approved to move forward with the Oakridge expansion! This is SO exciting! We are very pleased with how the process went to obtain these permissions. Thank you Oakridge school board, especially Mr. Tom Livezey.

Even though we are excited to share this with you, we kindly ask you refrain from riding this area as well as the White Rd. expansion. They will be worth the wait, we promise! See attached proposed trail map.

Some news from our Dalton Equestrian park; we will need to make a cut through trail. Unbeknownst to a few of us, our trail was actually on Fruitland township property, so when it sold, the people put a “No Trespassing” sign up. From the looks of the trail map, it won’t be too difficult. We will shoot to work on this throughout the winter. See attached photo of new boundaries.

Due to the loss of that trail, we are looking for volunteers that live in the local Muskegon municipalities, that would be willing to be equestrian representation at board/commission/parks and rec meetings, as needed. Please reach out if this is something you could do. Ideally, we would LOVE to have designation in each municipality. This is how we GAIN AND PROTECT our trails. See attached photo of needs.

AS A REMINDER: The trails at the Hall rd. staging area are also snowmobile trails. If there is more than 4 inches on the ground, it is **CLOSED** to equestrians. You may also find the gate at the end of Hall rd, just before the staging area, is closed and locked. At this time it is not, but if you find it is, please use the Maple Island staging area and trails. Maple Island staging area and trails are **OPEN DURING WINTER**. Please be mindful.

The Port-a-johns are out of service until the spring.

Do we have any members that would be willing to donate plowing services for our staging areas?

MCTRA acquired some utility poles for camping! However, they did not get sunk before the ground froze. Rest assured, once there is a chance, picket posts will be going in at the HALL RD STAGING AREA! WOOHOO! This area will provide a much more private space along with being able to camp at event location. This was also one of the most popular suggestions on our feedback survey.

Thank you to those who sent your thoughts in! We will also start posting a weekly “Meet and Ride” post, as that was the second. Please feel free to always send us your thoughts! Muskegoncountytra@gmail.com

2025 Membership is LIVE!

Muskegon County Trail Riders is excited for growth in 2025 and we would be grateful to have your support. Please re-new or submit your new membership by visiting: www.muskegoncountytrailridersassociation.com

Submit your membership before Jan 1, be entered into a drawing for \$25 to our NEW ONLINE STORE!

Thank you to those who have already submitted their memberships. We could not continue to expand and support our equestrian community without you!

Visit our NEW online store!

<https://muskegoncountytrailriders.itemorder.com/shop/home/>

Coming up....

Sunday, December 8th- Winter Wonderland with MCTRA! Come enjoy photos with the Grinch and his friends, a lantern and light trail that ends at a bonfire with hot chocolate! Prize for best costume (horse and rider). Walkers and riders welcome. Maple island staging area. Registration: \$10

Our annual membership meeting is February 2, 2025 from 12pm-2pm at the Fruitport Eagles.

We will be voting on some board positions, please come support! (Candidates will be e-mailed to members prior to meeting). Only members in good standing are allowed to vote.

Thank you SO much for your continued support of Muskegon County Trail Riders Association. We are GROWING, EXPANDING and DOING GREAT THINGS!

HAPPY TRAILS!

Winter Wonderland

...with Muskegon County Trail Riders Association

JOIN US SUNDAY, DECEMBER 8 AT 2P.M.

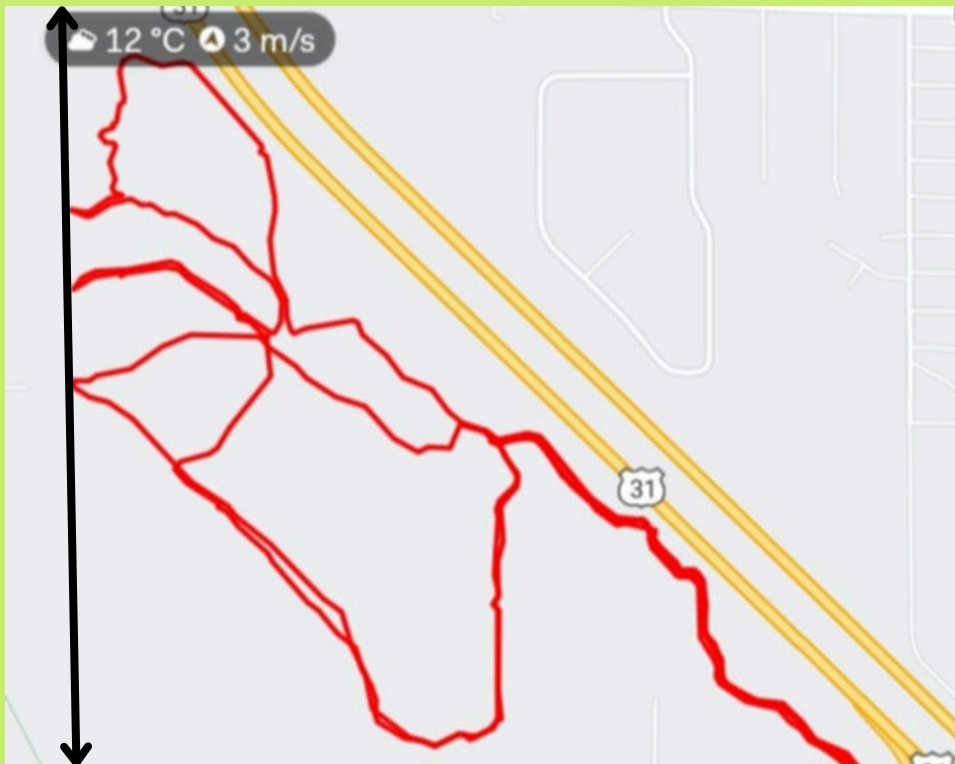
- ❄️ Get your photo taken with the Grinch!
- ❄️ Enjoy a lantern-lit trail ride!
- ❄️ Bonfire and hot chocolate to follow!

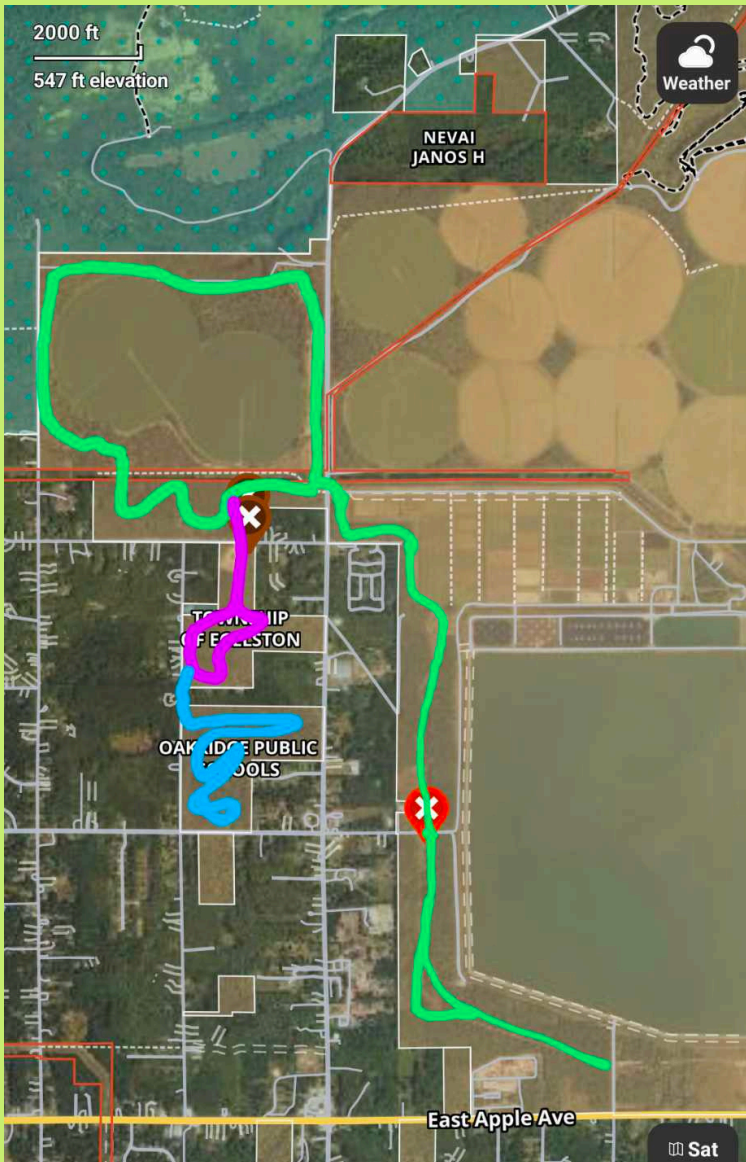
Where: Maple Island Staging Area

Cost: \$10 per person

Contest for BEST dressed equine! Decorate your horse in theme for a chance to win some prizes!

New boundary marks at Dalton Equestrian Park





GREEN: Current trail system
PURPLE: White Rd. expansion-
tagged, needs
trimming/marking/mapping
BLUE: Oakridge expansion (not
assessed yet).

Equestrian Representation Needed:

- Blue Lake Township
- Dalton Township
- Fruitland Township
- Whitehall Township
- Montague Township
- Egelston Township
- Lakewood Club
- Sullivan Township